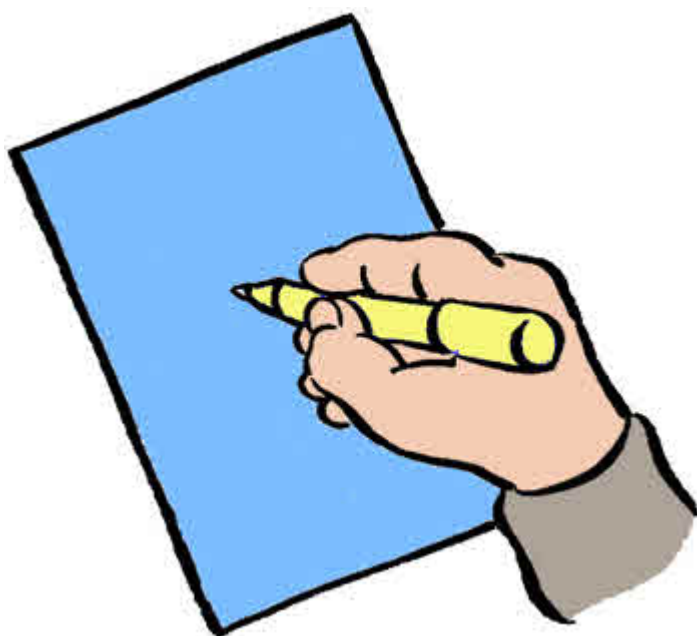


Fulfilling and Rewarding lives

Asking what you think about how to make services for people with autism better.

Answers Booklet



An EasyRead version of: Implementing “Fulfilling and rewarding lives”: Consultation for statutory guidance for local authorities and NHS organisations to support implementation of the autism strategy (2010)



Questions about Area 1

Question 1

Do you think these plans say what services have to do about finding out if someone has autism?



Question 2

What else could services do?



Question 3

Is there anything else that would make a difference?



Question 4

Do you think people will understand these plans?



Question 5

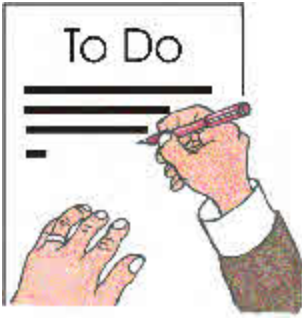
Is there anything else you want to say about finding out if people have autism?

Questions about Area 2



Question 6

Do you think these plans say what services have to do when they think someone has autism?



Question 7

What else could services do?

A large, empty rectangular box with a dark blue border, intended for writing an answer to Question 7.



Question 8

Is there anything else that would make a difference?

A large, empty rectangular box with a dark blue border, intended for writing an answer to Question 8.



Question 9

Do you think people will understand these plans?



Question 10

Is there anything else you want to say about what services have to do when they think someone has autism?



Questions about Area 3

Question 11

Do you think these plans say what social services have to do to find out what services you need?



Question 12

What else could services do?



Question 13

Is there anything else that would make a difference?



Question 14

Do you think people will understand these plans?



Question 15

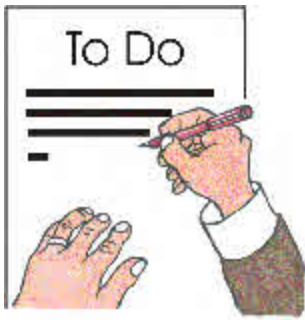
Is there anything else you want to say about finding out what services you need?

Questions about Area 4



Question 16

Do you think these plans say what services should do about planning for people with autism as they move from children's to adult services?



Question 17

What else could services do?

A large empty rectangular box with a dark blue border, intended for writing an answer to Question 17.



Question 18

Is there anything else that would make a difference?

A large empty rectangular box with a dark blue border, intended for writing an answer to Question 18.



Question 19

Do you think people will understand these plans?



Question 20

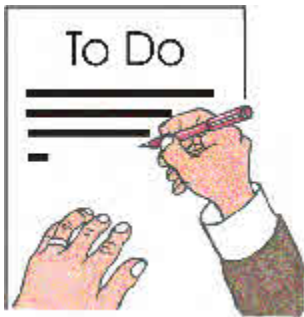
Is there anything else you want to say about planning for people with autism as they move to adult services?



Questions about Area 5

Question 21

Do you think these plans say what authorities have to do about planning other services for adults with autism?



Question 22

What else could services do?



Question 23

Is there anything else that would make a difference?



Question 24

Do you think people will understand these plans?



Question 25

Is there anything else you want to say about planning other services for adults with autism?



Questions about Area 6

Question 26

Do you think these plans say what services have to do about training staff?



Question 27

What else could services do?



Question 28

Is there anything else that would make a difference?



Question 29

Do you think people will understand these plans?



Question 30

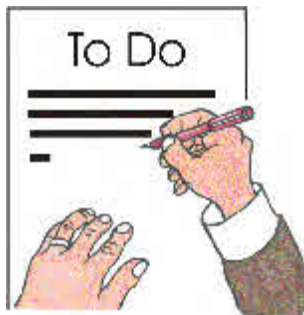
Is there anything else you want to say about training?



Questions about Area 7

Question 31

Do you think these plans say enough about having local leaders?



Question 32

What else should happen at a local level to make change happen?



Question 33

Is there anything else that would make a difference?



Question 34

Do you think people will understand these plans?



Question 35

Is there anything else you want to say about local leaders?

About You



Please answer these questions about you. If a group of you are doing the answers together please tell us about everyone in the group.

Your name:



Your job:



Your address, or the town and county you come from:



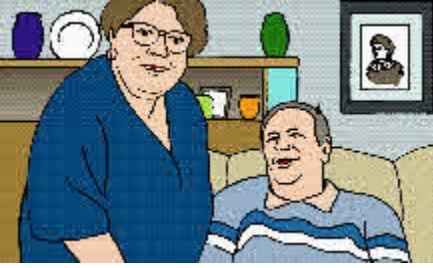
Are you a man or a woman?



Man

Woman

Are you a:



Family Carer



Person that uses services



Healthcare professional



Social care professional



Other (please tell us below):



What is your race or ethnic origin?

British



European

Eastern European



Caribbean

African



Asian Indian

Pakistani

Bangladeshi



Other (please tell us below):



We have to make sure that we think about the needs of everyone.



We especially need to think about the needs of people who sometimes don't get treated fairly and equally.



Do you think we have thought enough about the needs of:

- women with learning disabilities?



- people with complex needs?



- people from black and minority ethnic groups?



- older people with learning disabilities?



- gay, bisexual, and lesbian people?



- people with religious beliefs?

Yes, I agree

No, I do not agree

Please tell us why:



Thank you for taking the time to answer these questions.

Please return your answers to:



**Adults with Autism Statutory Guidance
Consultation
Department of Health
Unit 124
Wellington House
135 - 155 Waterloo Road
London
SE1 8UG**

Credits



This paper has been designed and produced for the Department of Health by the EasyRead service at Inspired Services Publishing Ltd.

Ref ISL138/10. July 2010.



Artwork is from the Valuing People Clipart collection and cannot be used anywhere else without written permission from Inspired Services Publishing Ltd.



To contact Inspired Services:



www.inspiredservices.org.uk