

Linkin In



community partnerships



Linkin for fun

Linkin with new friends

Linkin with community projects

Linkin to healthy activities

Linkin and get involved

Linkin with us

Linkin In..... working together with the community



Who are we?



Linkin In is a small person centred service for adults with learning disabilities. We are open Monday to Friday and can be flexible with our hours. We are a social enterprise which means we are a non-profit making company. We have a base room in Kirkdale Community centre. The Centre has many facilities which we can use. Here are just some of them.....



A sports hall



A dance and drama theatre



A computer room

We work together with the community on projects and link in with activities. We will support you to be really included and involved.

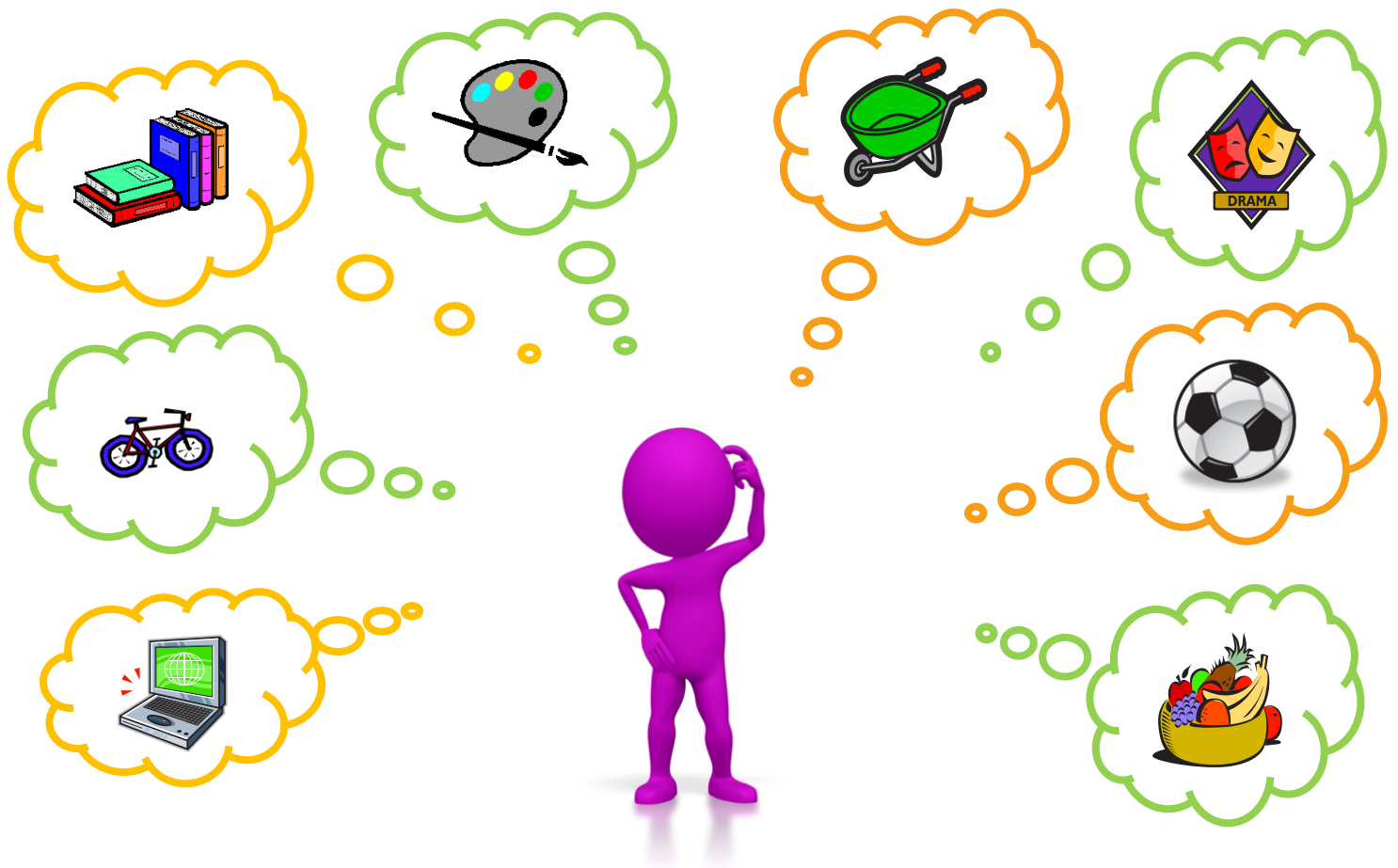


This is one of the exciting projects we are Linkin In with! Linkin with us and help to turn this into a community garden! We have some other volunteering projects too.

We have some activities which will build on your basic skills such as communication, numeracy and computers.

We have some life skills activities such as money handling, road safety, social skills and healthy lifestyles.





What will you link in with?

How we will support you.



We will listen to what you want, what you are interested in and what you want to achieve.

We will support you to speak up and be heard.



We will make an individual plan with you.

We will find out what support you may need.

We will support you to become more independent.



We will support you to develop new skills and experiences.

We will support you to try out new things.



We will support you to meet new people and make new friends.

We will support you in small groups.

We will support you to be included and become involved.



Our service is based around the principles of Valuing People.

We are a person centred service and our staff are trained in person centred planning.

What should I do now?



You can access our service by using your direct payments, personal budget or by talking to your Care Manager. Contact us and we can talk about your support needs and prices.



Come and see us!
Get in touch and arrange a visit.



Look at our website at www.linkinin.co.uk
Or send an e-mail to admin@linkinin.co.uk for more information.



Ring Julie at Linkin In for more information.
Telephone number is **07552 775 442**



The Centre is located between Sefton and Liverpool and has good public transport links.

Our address is Linkin In Ltd, Kirkdale Community Centre, 238A Stanley Road, Kirkdale, L5 7QP.